



corehesion

**Your workflows, unified.
Your success, multiplied.**

COREHESION.COM.AU

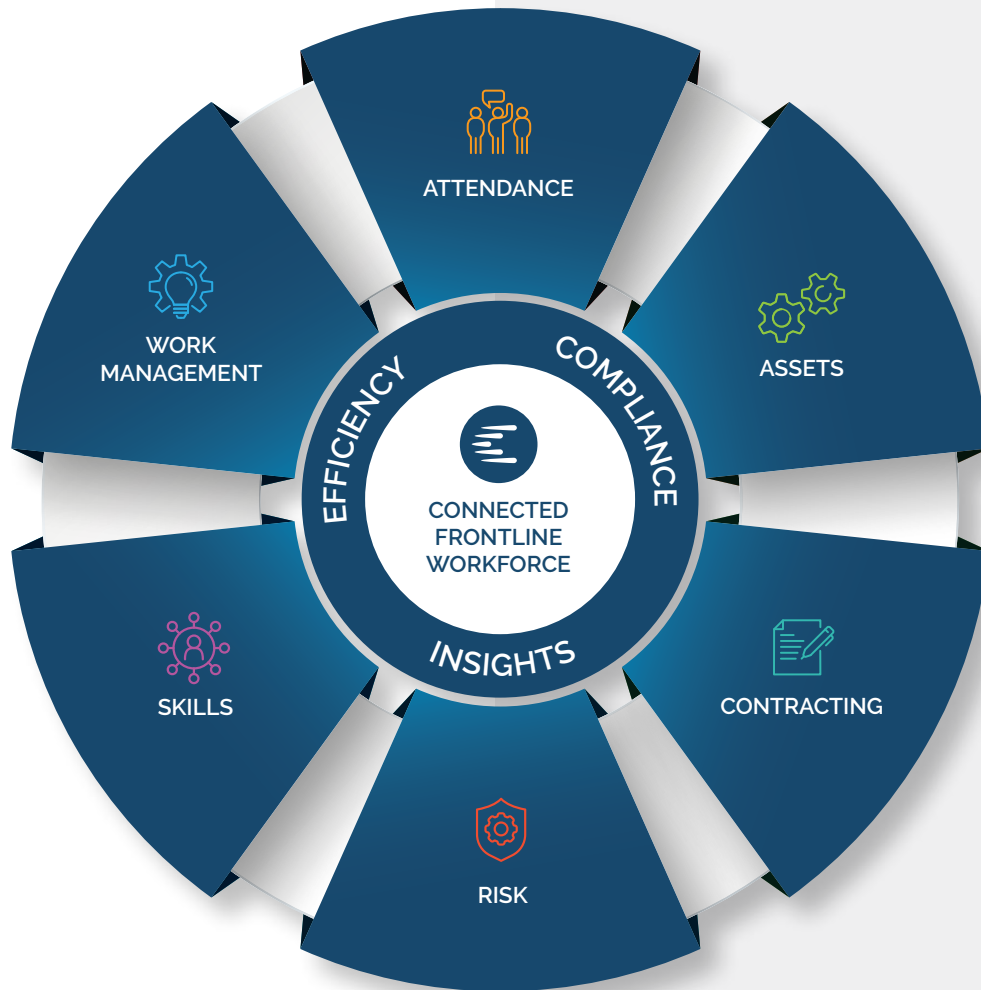


Insight-driven solutions for real results

Our Vision is to improve outcomes for industry through relentless innovation. We do this by empowering people to conquer challenges and drive positive change.

By focusing on innovation, we continuously seek new ideas, technologies, and approaches to drive change. By empowering people internally and external to our organisation, we foster a culture of collaboration and creativity, enabling individuals to contribute their unique perspectives and skills towards solving problems.

This combination of innovation and empowerment leads to transformative solutions and improved outcomes for industry.



Connected Frontline Workforce

Simplify work and connect your teams, information and workflows ensuring cohesion at the core of your operation.

- Deploy powerful digital capabilities
- Adaptable to client specific needs
- Meet performance goals with ease

Unify your workflows

By unifying core operational components such as Attendance, Assets, Contracting, Risk, Skills, and Work Management, Corehesion connects day-to-day frontline activities under one platform, enhancing efficiency, compliance, and visibility across operations with customisable role-based access control to suit any organisation.

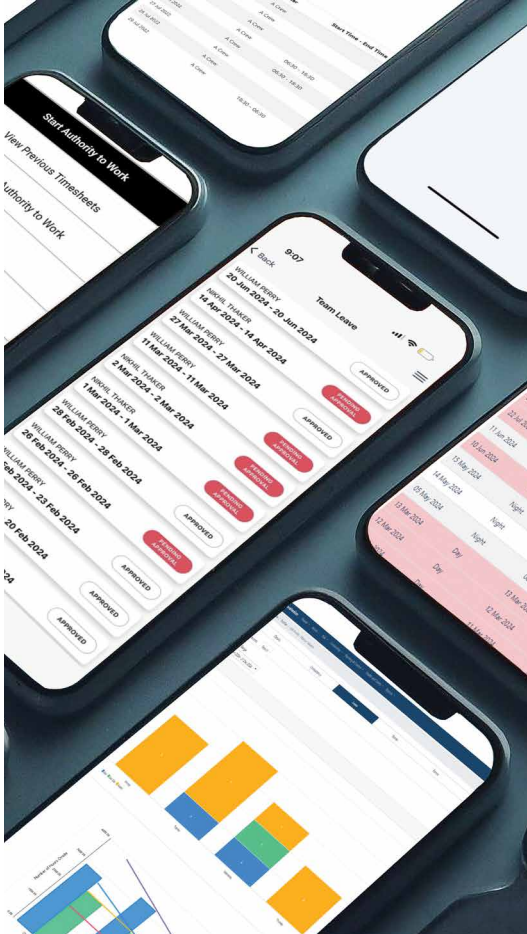
Corehesion enables you to deploy powerful digital capabilities quickly and cost effectively.

Deploy individual components as needed, tailoring the platform to your unique business needs and integrating with your existing technology architecture securely and reliably.



Attendance

MODULE



By combining real-time data with seamless integrations, the Attendance Module transforms workforce management.

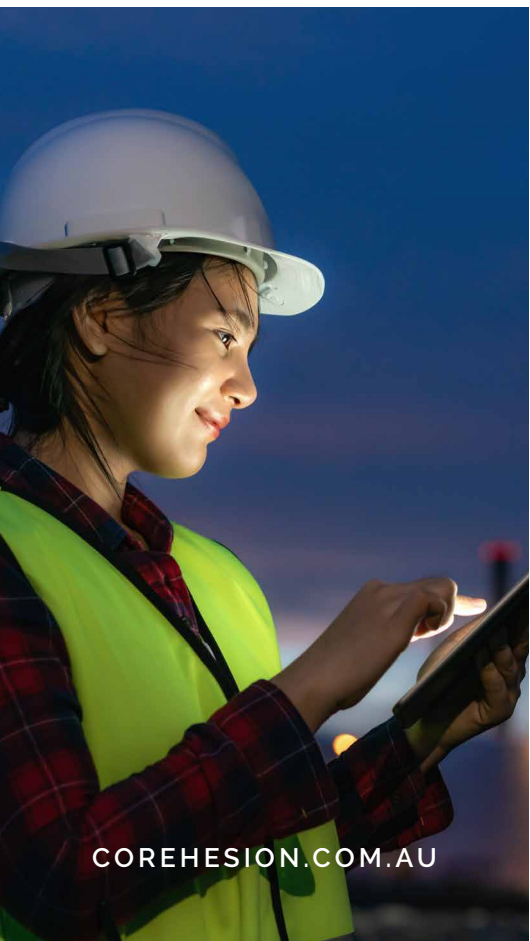
It eliminates inefficiencies, enhances decision-making, and ensures compliance with labour requirements—all while keeping your operations connected and your team empowered.

STREAMLINE WORKFORCE MANAGEMENT WITH COMPREHENSIVE ATTENDANCE SOLUTIONS

The Corehesion Attendance Module empowers businesses to efficiently manage workforce attendance, rostering and time tracking through a seamless, integrated platform.

Designed to enhance productivity and ensure accuracy, this module delivers visibility and control over workforce operations.

With powerful core functionality and tailored customisation, you stay in control while seamlessly upgrading to a system that works smarter.





ATTENDANCE KEY FEATURES

Rostering and Leave Management

- Plan rosters and manage both planned and unplanned leave with ease.
- Workforce can engage directly via the app on their smartphones or through onsite kiosks.
- Leave requests and timesheets are seamlessly routed to supervisors for approval workflows.

Dynamic Visibility and Labour Forecasting

- A single, digital source of truth ensures transparency and precision in labour forecasting.
- Simplifies scheduling, work allocation, and absenteeism management for optimal productivity.

Seamless Integration

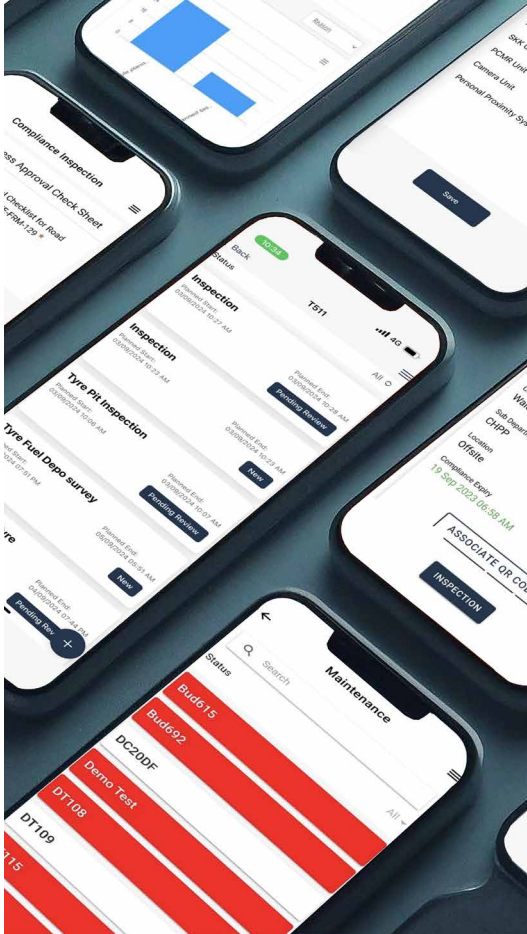
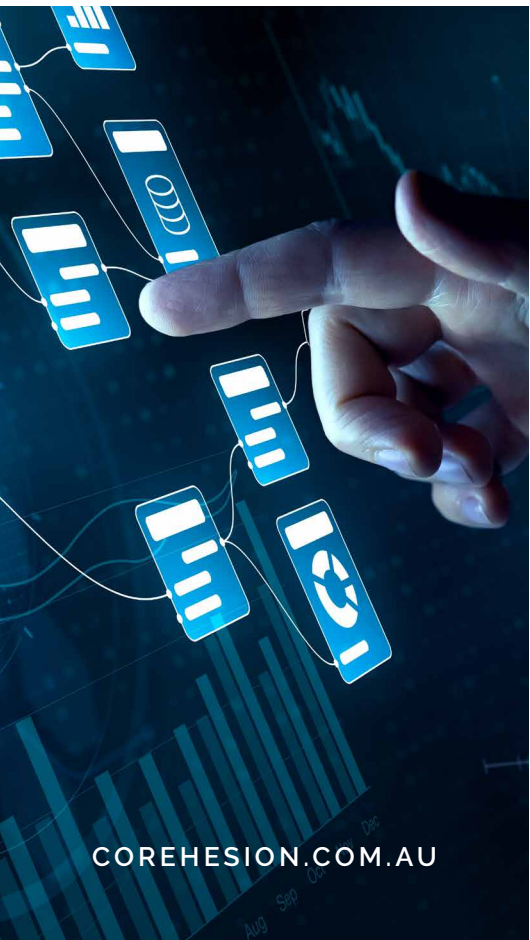
- Live integration with third-party systems allows compatibility with existing roster or leave management solutions.
- Seamlessly connects with Corehesion's entire ecosystem including scheduling, capacity management, operator lineup and utilisation functionalities.
- Syncs with site security, gates and access systems to provide live attendance data and automate time reconciliation.
- Integrates with HRIS and ERP systems to link attendance data with payroll and work order tracking.





Assets

MODULE



MAXIMISE ASSET PERFORMANCE WITH STREAMLINED COMPLIANCE AND MAINTENANCE MANAGEMENT

The Corehesion Asset Module offers a robust solution for managing asset maintenance, compliance and operational efficiency.

Designed to simplify processes and integrate seamlessly into your workflows, this module empowers businesses to optimise asset utilisation while also ensuring safety compliance.

With tailored customisation you stay in control while seamlessly upgrading to a smarter system.

With a focus on efficiency, safety, and compliance, the Asset Module transforms how businesses manage their assets.

By combining advanced tracking, compliance verification, and seamless integration, this solution ensures that your assets are always ready, reliable, and compliant.





ASSETS KEY FEATURES

Enhanced Compliance Monitoring

- Introduction-to-site and equipment compliance features ensure assets meet safety and regulatory standards.
- Contractor authority-to-work system offers safe asset design, condition validation, and use approval.
- Vehicle tagging system automates compliance verification, granting gate access only to approved assets.

Comprehensive Maintenance Management

- Integrates with maintenance and operational scheduling functionality for resource allocation, avoiding conflicts, reducing downtime and improving asset utilisation.

Connect to Third Party Systems

- Live integration with third-party systems allows compatibility with existing CMMS or ERP, creating a single source of truth for maintenance plans and pre-start inspection defect tracking.

Seamless Integration

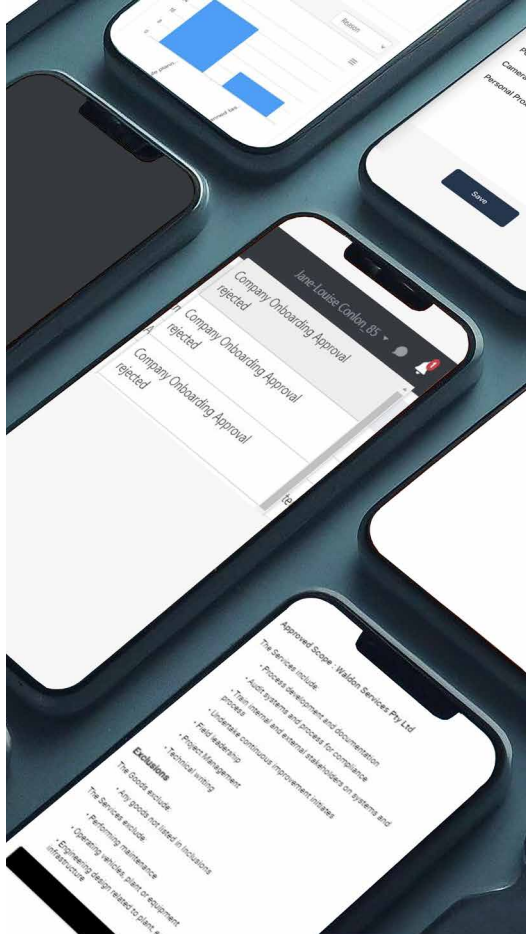
- Seamlessly connects with Corehesion's entire ecosystem including our Work Management functionality to optimally schedule and allocate assets.





Contracting

MODULE



SIMPLIFYING COMPLIANCE AND STREAMLINING CONTRACTOR MANAGEMENT

The Corehesion Contracting Module simplifies company and worker onboarding, compliance management and authority to work processes. Designed for efficiency and control, it integrates essential functionalities.

Ensure compliance, enhance visibility and simplify contractor management while maintaining operational safety and efficiency.



Easily track, report and manage contractor logins, supervisor approvals, monitoring, authority to work, timesheets and invoicing.

Seamlessly linked with equipment compliance and introduction-to-site features for end-to-end approval processes.





CONTRACTING KEY FEATURES

Authority to Work

- Centralised system for managing work permissions, integrating equipment and site compliance checks, and embedding risk assessments to ensure all workers and contractors are authorised and prepared for safe operations.

Streamlined Onboarding and Compliance

- Simplifies the onboarding process for companies and workers while ensuring all compliance requirements, such as certifications and approvals, are met and maintained.

Embedded Risk Assessment

- Includes a comprehensive risk library for maintaining hazards and control measures site-wide.

Time Tracking Integration

- Connects with Corehesion's timesheet module and your HRIS or ERP to capture time directly to work orders.

Access Control

- Syncs with site security systems for real-time monitoring, access management, and automated timesheet verification.



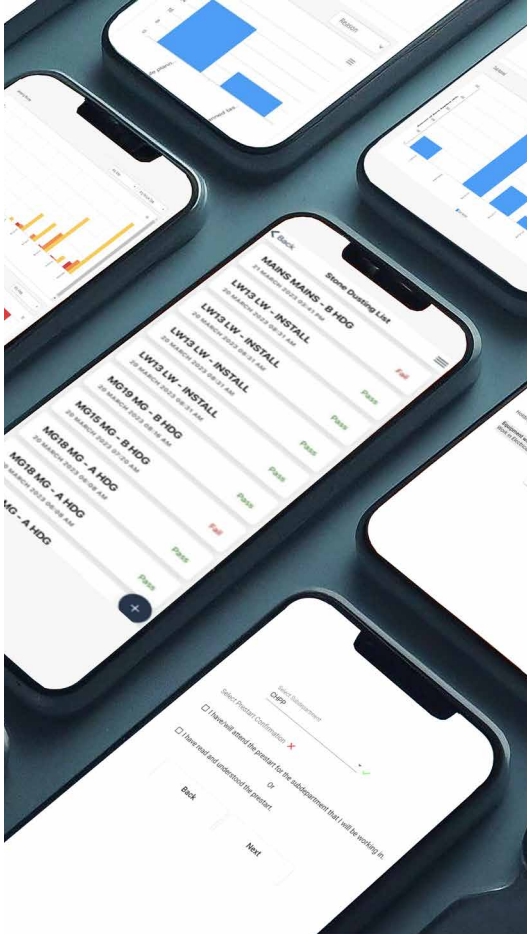
REQUEST A DEMO 1300 344 966





Risk

MODULE



PROACTIVE RISK MANAGEMENT FOR SAFER, SMARTER OPERATIONS

The Corehesion Risk Module provides comprehensive tools to ensure workplace safety and compliance through effective risk management.

Empower your organisation to proactively manage risks, enhance safety culture and ensure adherence to regulatory standards.



Comprehensive and proactive risk management that ensures workplace safety and operational continuity.

With integrated tools for team monitoring, fatigue management, permits to work and incident reporting, it centralises risk controls while seamlessly aligning with maintenance and contractor systems for end-to-end safety assurance.





RISK KEY FEATURES

Safety Monitoring

- Covers isolated worker tracking, permits to work, pre-starts and safe starts, fatigue management and quick risk checks (eg: Take-5/60 seconds) for safety.

Incident and Hazard Reporting

- Enables streamlined documentation and tracking of workplace incidents and hazards.

Specialised Risk Management

- Includes focused solutions like explosive dust management for high-risk environments.

Integrated Functionality

- Risk assessments, Take-5s and permits to work are integrated with maintenance mobility and linked to work orders, ensuring operational alignment.

Embedded Contractor Management

- Permits to work and risk assessments are also embedded within contractor workflows for enhanced oversight and compliance.

Stone Dust Management

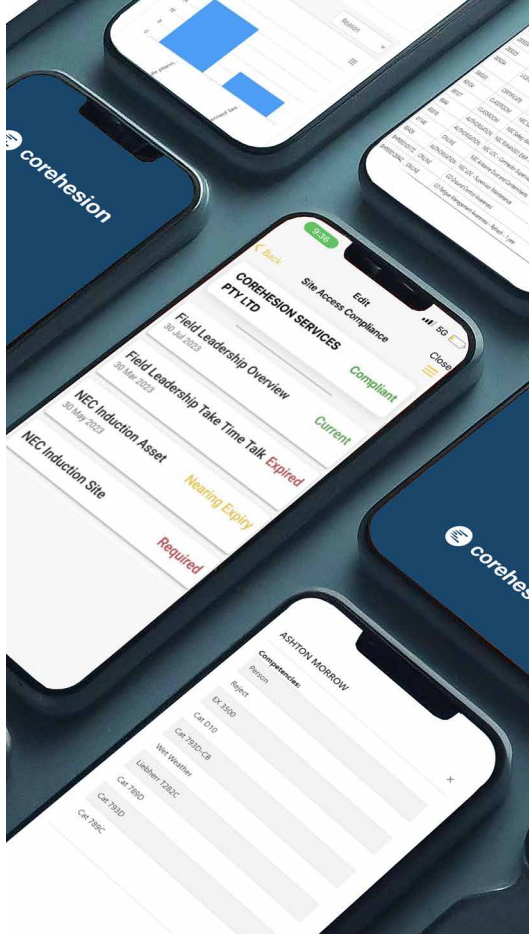
- Provides accurate sampling, optimised dust application, failure re-treatment protocols, and compliance monitoring with actionable insights, ensuring safety and operational efficiency.





Skills

MODULE



Simplify workforce competency management with tools that streamline learning, compliance, and proficiency tracking.

Integrated with operational systems, the Skills module ensures skilled teams, safe access, and efficient workforce deployment—all tailored to meet your business needs.

STREAMLINE WORKFORCE COMPETENCY MANAGEMENT TO ENHANCE SAFETY, COMPLIANCE AND OPERATIONAL EFFICIENCY

The Corehesion Skills Module ensures a skilled and compliant workforce while aligning training and site access with operational demands.

Data-driven insights utilise advanced analytics to track training effectiveness, identify skill gaps and forecast future training needs.

Cross-site integration facilitates synchronisation of training and compliance data across multiple sites for large-scale operations.





SKILLS KEY FEATURES

Learning and Training Management

- Tracks training needs and manages learning programs to ensure up-to-date workforce proficiency.

Proficiency and Competency Integration

- Links competencies to permits, contractor authority to work, operator lineup, and scheduling for seamless workforce coordination.

Certification Expiry Alerts

- Proactively notifies about upcoming certification expirations, ensuring employees and contractors remain compliant and avoid being delayed or denied access at site entrances.

Real-Time Skill Matching

- Tools to match employees' skills with available roles, tasks, or projects to optimise workforce deployment.

Site Access Compliance

- Integrates with the site security system to ensure only trained and compliant personnel gain access.



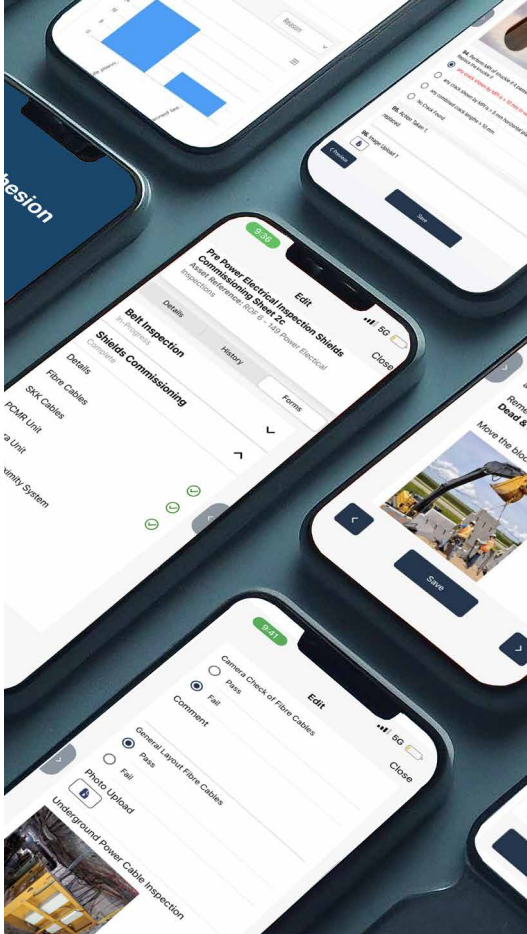
REQUEST A DEMO 1300 344 966





Work Management

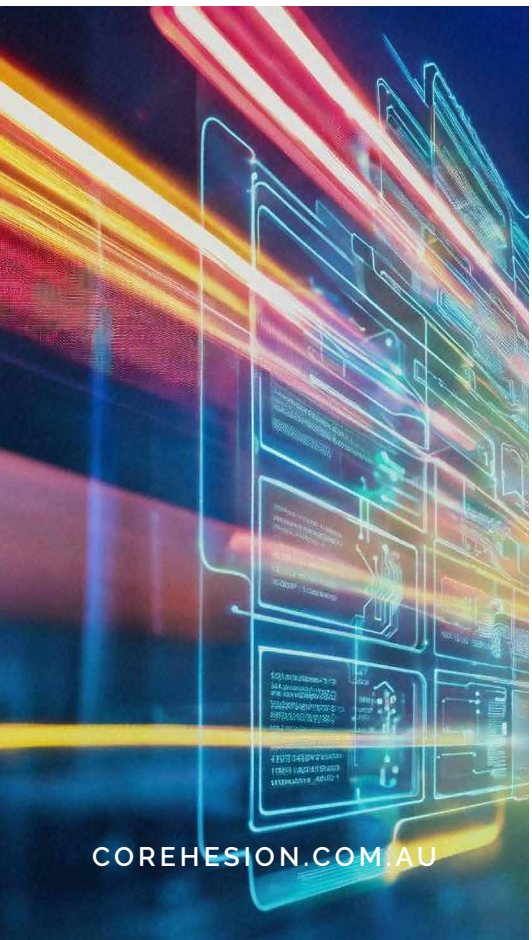
MODULE



INTUITIVE PLANNING AND SCHEDULING TOOLS THAT DELIVER EFFICIENCY, TRANSPARENCY AND OPTIMISED PERFORMANCE FOR MODERN WORK ENVIRONMENTS

The Corehesion Work Management Module offers advanced tools for end-to-end task and production planning, enabling seamless workflow coordination and resource optimisation.

Mobile-friendly digital work instructions provide real-time tracking, feedback and seamless management of inspections and quality control. Machine learning and computer vision support predictive maintenance and accuracy to reduce downtime.



Empower teams to achieve higher levels of precision and reliability across your Work Management systems.

Bi-directional integration with CMMS or ERP systems ensures a unified, data-driven approach.

Achieve streamlined operational visibility, improved efficiency and higher-quality outcomes.





WORK MANAGEMENT KEY FEATURES

Comprehensive Planning and Scheduling

- Supports production and task planning with Gantt charts, capacity loading, and resource allocation, integrating attendance, skills, and maintenance schedules.

Optimised Resource Allocation

- Automates and optimises resource allocation using simulated annealing algorithms, ensuring efficient asset utilisation and conflict-free scheduling.

Maintenance Integration and Execution

- Aligns equipment and operator tasks with maintenance schedules, supporting pre-starts, outage management, and seamless return-to-service tracking.

Digital Work Instructions and Mobility

- Provides frontline teams with mobile access to instructions, real-time progress tracking, pre-starts, and live feedback.

Inspection and Testing

- Manages quality and compliance through inspection, non-conformance registers, defect tracking and punch lists.

Comprehensive Maintenance Management

- Supports the creation of effective maintenance strategies and provides mobility tools to streamline operations across maintenance and production workflows.



REQUEST A DEMO 1300 344 966





corehesion

CONNECTED SOLUTIONS AT YOUR FINGERTIPS

1300 344 966 COREHESION.COM.AU